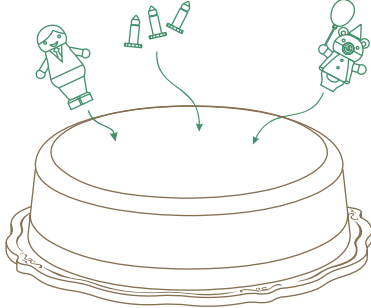


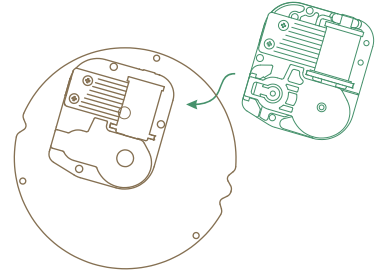
Step 1

零件裝飾完成後，即可開始安裝機芯



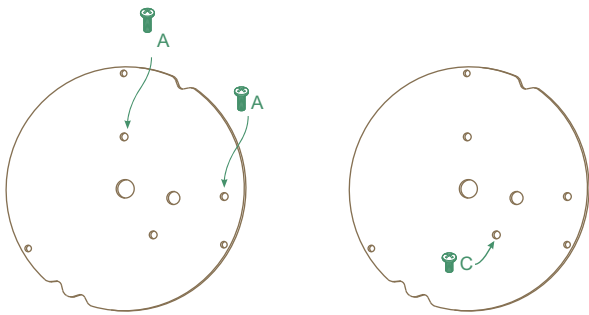
Step 2

將機芯對準底板背面圖示



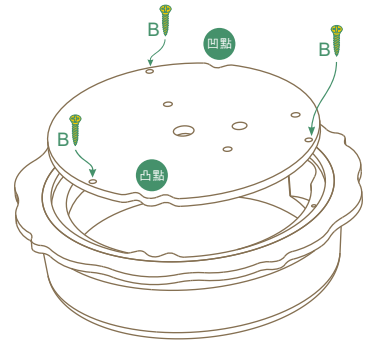
Step 3

(1) 翻面將螺絲A依圖示位置上緊固定 (2) 將螺絲C(短)依圖示位置上緊固定



Step 4

依對位凹凸點將底板扣入底座，鎖上螺絲B(金色尖頭)



Step 5

將發條轉鍵順時針方向旋緊



完成示意圖

